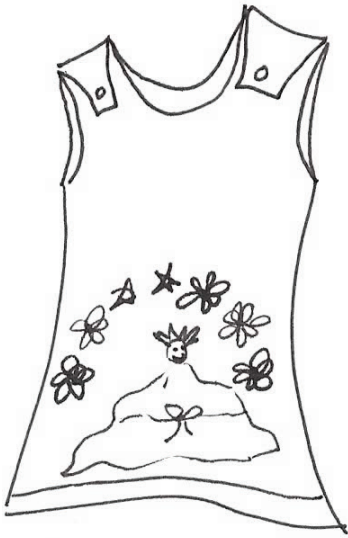
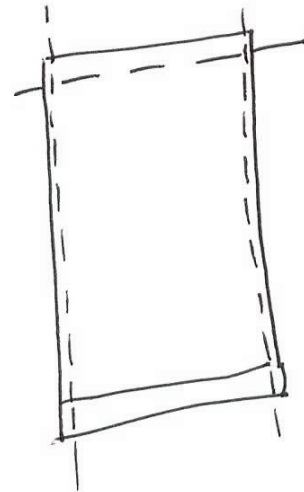


# Little girls PILLOW CASE DRESS

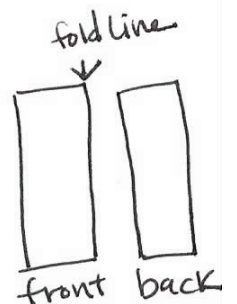


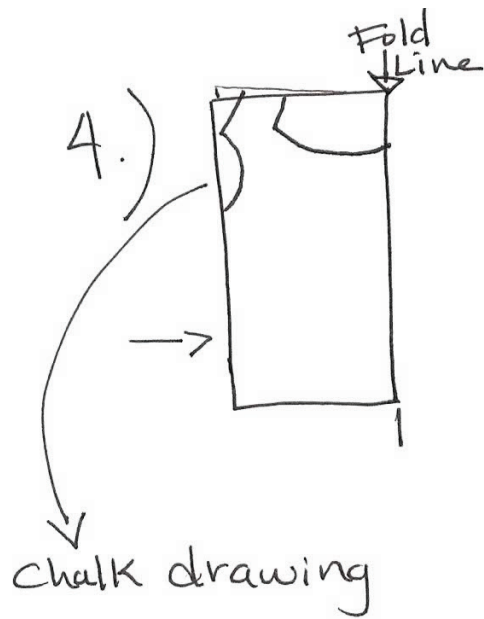
1.) BUY A VINTAGE Pillow case @  
A THRIFT store

2.) Cut top seam off  
AND SIDE SEAMS off  
so there are just  
2 rectangles left.  
(not joined together in  
any spots)



3.) fold each in 1/2 separately





While folded, use chalk to draw arm openings, neck line and shoulder straps.

Do this on the cut side NOT the fold side.

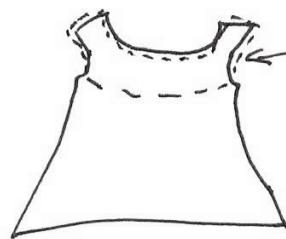


5.) Cut along the chalk drawing  
Lay the front on top of the back & trace to line up arm/neck cut lines.

6.) Use the scrap to line up on the neck area to make a liner



\*NOTE: DO THIS for front & back

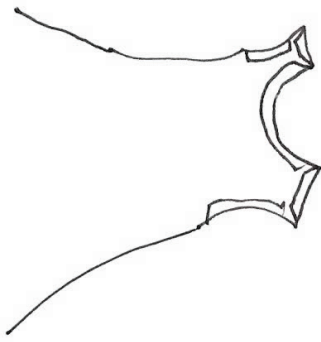


cut scrap or a diff. piece of fabric to same shape. To make liner.

7.) Use no-sew dbl stick tape to temp. attach these pieces.

8.) Heat up your iron.

Fold back all neck & arm seams



AND iron them down —

This will make it  
easier to sew.

9.) Now sew together the neck  
& arm seams w/ the lining

DO NOT sew front & back  
together yet. 1st it's time

to decorate & make it

your own!

**Quilt Note:**

my pillow case was  
white and I used  
pink thread

just for  
fun contrast!

\* \* \*

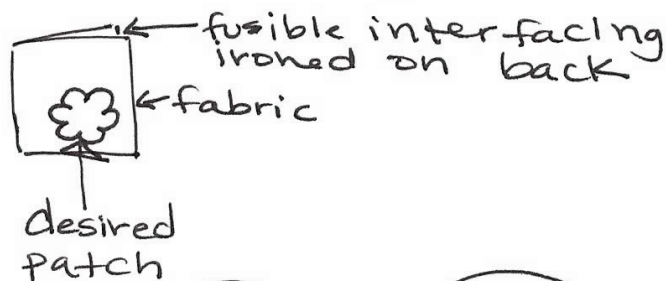
10.) For this next step I used  
a second vintage pillow case  
this time one w/ a print.  
However, you could use a  
cotton fabric.

— Back the material w/ iron-on  
fusible interfacing

## ⚠ note:

about fusible interfacing

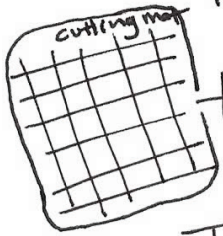
- \* Always follow the brand's manufacturer's instructions
- \* Buy more than you think you'll need
- \* Use a piece of fabric  $\frac{3}{4}$  Fusible interfacing dbl the size of your desired patch



II.) Once the fabric / interfacing is cool select your designs from the cricut or cuttlebug.

For my project I used Flowers from the "forever Young" cricut cart  $\frac{3}{4}$  all of the mixed flowers I had on hand for the cuttlebug

12.) If using fused fabric on the Cricut be sure to fully smooth it down on the sticky cutting mat.



- Then cut just like paper but w/ the pressure @ Max & the speed @ min.

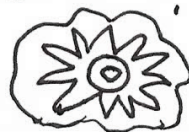
- Cut shapes out of the fused fabric on the Cricut too.



13.) Once you have a happy pile of flowers

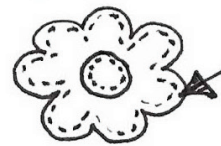


Start peeling the interfacing of the smaller pieces, stacking them into layers & ironing them together



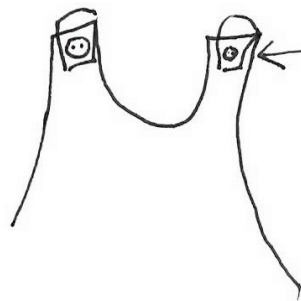
14.) Once you are happy w/ your layers of flowers lay them out on top of the dress, peel the Back off of the bottom flower & iron down.

15.) Stitch the flowers down by hand or machine.



Cute note:  
use a  
contrasting  
color thread  
for POP!!

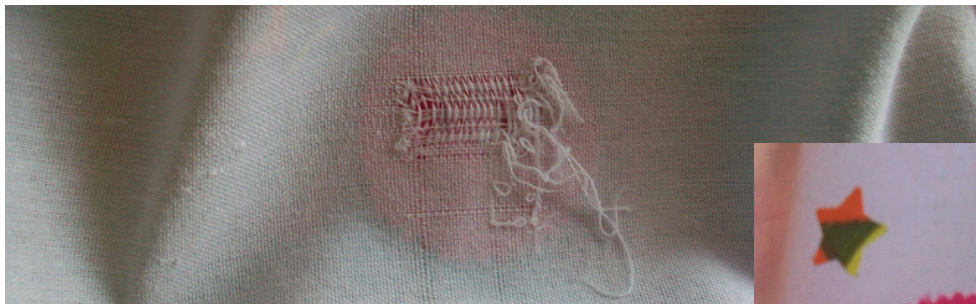
16.) on the top straps sew velcro or buttons as the closures.



Stitch on a  
functional  
button &  
button hole  
OR  
Velcro onto  
both pieces.

(7.) Then sew the two panels together. By placing them front to front, stitching up the side seam, then turning inside out. Now go put it on your girl!!!  
Enjoy the pillow case dress! ♡

LOVELY TIP:



If your pillow case has a flaw or wear on it - use an iron on applique to cover it up. See example of how I did just that here.

